



VIDEO SOLUTIONS

GALAXY DISCOVERY



N-Series 2U/3U/4U Network Video Recorders

Professional Grade

The Discovery III N-Series is a professional grade network video recording solution with virtually unlimited scalability. Available in 2U, 3U, and 4U chassis, the N-Series can be configured for video analytics, support for access control systems, and full integration with POS solutions.

Discovery III N-Series recorders can be scaled from one camera to thousands allowing you the flexibility to meet the unique demands of enterprise level IP installations. With features such as active directory integration, camera discovery protocols, and central management software, the N-Series makes it easy to deploy and administer an IP surveillance solution.

Ready for fast and seamless integration with your existing IT infrastructure, the N-Series is designed around Microsoft Windows 7 Embedded. Your security investment has never been easier to maintain. Multiple users can simultaneously connect through any network or Internet connection for instantaneous live viewing, digital search, and off-site video storage. Discovery's powerful network recording software enables you to establish recording schedules, create motion detection zones, and use PTZ controls for any attached network video devices with PTZ capabilities.



FEATURES:

- **Virtually unlimited scalability**
- **Dynamic IP camera discovery and configuration**
- **H.264 / MPEG-4 / M-JPEG codec support**
- **Supports server-side and edge motion detection**
- **Up to 4 removable hard drive bays**
- **ReportStar ready**

PRODUCT SPECIFICATIONS

	2U				3U			4U		
Camera Channels	8	16	32	64	8	16	32	16	32	64
Looping Outputs	N/A				N/A			NA		
Max IPS Per Channel	30	30	30	30	30	30	30	30	30	30
Recording Rate (IPS)	Dependent on resolutions supported by network device									
Live Display Rate (IPS)	Dependent on resolutions supported by network device									
Audio Channels	Up to 16, requires external device or network video device support									
Video Outputs	1 DVI-D, 1 VGA, 1 HDMI, 1 Display Port									
Digital Relay Outputs	Up to 16; requires external device or network video device support									
Alarm Sensor Inputs	Requires external device or network video device support									
Image Compression	H.264, MPEG-4, M-JPEG									
Hybrid										
Recording Resolutions	Dependent on resolutions supported by network device									
IP Recording Resolutions	Dependent on resolutions supported by network device									
Video Signal Loss Detection	Yes									
Motion Detection	Up to 15 motion areas, Adjustable sensitivity									
Remote Software	Remote, RADIUS, Web Viewer, Mobile Apps									
PTZ Control	via ONVIF or direct integration									
Recording Mode	Continuous, Motion Detection, Sensor									
Playback Search	Multiple Enhanced Search Capabilities									
Backup	DVD±RW, Network, USB 2.0/3.0									
Digital Signature Support	Yes, AVI and JPG									
Dynamic DNS	Free for Life of Product									
ReportStar Enabled	Yes									
ONVIF Compliant	Yes									
Operating System	Microsoft® Windows 7® Embedded									
Storage Size	2TB standard (JBOD) / 6TB standard (RAID) / Up to 24TB (JBOD / RAID)				2TB standard / Up to 12TB (JBOD)			16TB standard / Up to 64TB (JBOD / RAID)		
Network	Dual GbE									
External Storage Options	RAID 5 iSCSI (Up to 64TB with Unlimited Scalability)									
Warranty	3 Years / 1 Year Advance Replacement									

N-Series Micro Network Video Recorder

Professional Grade

The Discovery III 4 Channel N-Series NM is a professional grade, feature rich, network video recorder built on the Microsoft® Windows® 7 Embedded platform. Available in a small form factor chassis, the NM recorder supports third-party integration for access control systems and central station monitoring.

Discovery III N-Series recording solutions can be scaled from one camera to thousands allowing you the flexibility to meet the unique demands of enterprise level IP installations. With features such as active directory integration, camera discovery protocols, and central management software, the N-Series makes it easy to deploy and administer an IP surveillance solution.



FEATURES:

- **Dynamic IP camera discovery and configuration**
- **H.264 / MPEG-4 / M-JPEG codec support**
- **Support for Active Directory**
- **Supports server-side and edge motion detection**
- **Up to 4TB Storage**
- **Optional POS & ATM Support**
- **ReportStar ready**

PRODUCT SPECIFICATIONS

	NM
Camera Channels	4 (upgradable)
Looping Outputs	-
Max IPS Per Channel	30
Recording Rate (IPS)	Dependent on resolutions supported by network device
Live Display Rate (IPS)	Dependent on resolutions supported by network device
Audio Channels	Up to 16, requires external device or network video device support
Video Outputs	1 DVI-D, 1 VGA, 1 HDMI, 1 Display Port
Digital Relay Outputs	Up to 16; requires external device or network video device support
Alarm Sensor Inputs	Requires external device or network video device support
Image Compression	H.264, MPEG-4, M-JPEG
Hybrid	
Recording Resolutions	Dependent on resolutions supported by network device
IP Recording Resolutions	Dependent on resolutions supported by network device
Video Signal Loss Detection	Yes
Motion Detection	Up to 15 motion areas, Adjustable sensitivity
Remote Software	Remote, RADIUS, Web Viewer, Mobile Apps
PTZ Control	via ONVIF or direct integration
Recording Mode	Continuous, Motion Detection, Sensor
Playback Search	Multiple Enhanced Search Capabilities
Backup	DVD±RW, Network, USB 2.0/3.0
Digital Signature Support	Yes, AVI and JPG
Dynamic DNS	Free for Life of Product
ReportStar Enabled	Yes
ONVIF Compliant	Yes
Operating System	Microsoft® Windows 7® Embedded
Storage Size	2TB standard /Up to 12TB
Network	Dual GbE
External Storage Options	RAID 5 iSCSI (Up to 64TB with Unlimited Scalability)
Warranty	3 Years / 1 Year Advance Replacement

Radius – Multi-Site Management Software

Galaxy's RADIUS Multi-Site Management Software solution provides a complete control and administration solution for Discovery III's entire line of products.

Designed for a multiple monitor environment, the RADIUS software platform enables you to simultaneously monitor alarms, retrieve video clips, and review live video streaming from multiple locations. RADIUS also offers a rich selection of management tools including remote administration, video backup, interactive mapping, and system configuration. RADIUS is designed to manage multiple Discovery III DVRs, HVRs, and NVRs from one location. Any application requiring video monitoring on one or more monitors, alarm monitoring (including visual map elements), and remote system management (health, settings, etc.) will benefit from the RADIUS Multi-site Management Software.

ADVANCED MULTI-SITE CAPABILITIES

Alarm Monitoring: Keep track of all incoming alarms (including motion, alarm input, and video loss) in real time.

Multiple User Accounts: Create an unlimited number of user accounts and manage them with full control of permissions and user privileges. Restrict access to individual recorders or individual cameras.

Remote Backup: Perform remote backup of video from any connected recorder.

Multiple Monitor Support: Multiple monitors allow you to view live video, search saved video, monitor maps for alarms, and monitor the alarm log simultaneously.

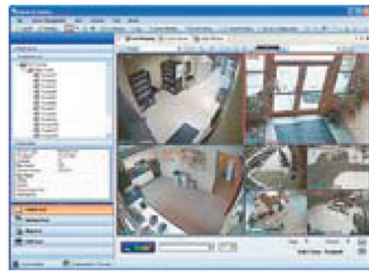
Specialized Searches:

Multiple Search: Simultaneously search video from multiple recorders on a single screen.

Preview Search: Break down a single day of video into 1 hour, 10 minute, and 1 minute blocks of time.

Index Search: Search video based on sensor, motion, and instant record events.

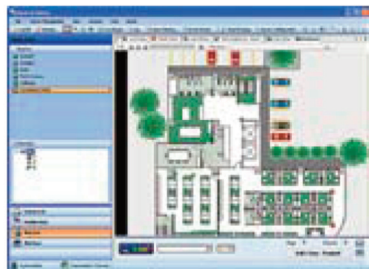
Compatible With All DVRs & NVRs: Connect to all Discovery III DVRs with RADIUS. Discovery III Video Servers and NVR systems are also compatible.



Live Display



Advanced Searches



Custom Maps

Windows Compatibility: With support for Microsoft Windows XP and Vista, Galaxy's RADIUS remote software can run on most existing PC systems.

Remote DVR Configuration: Change recording schedules, access user permissions, adjust camera settings, and more on all connected DVRs.

Custom Maps: Add floor plans, site maps and Internet maps such as Google Maps, to create a custom display with dynamic icons indicating the location of each camera, sensor, alarm, and DVR. Link maps together for seamless navigation and enable RADIUS to alert you of alarms as they happen.

FEATURES:

- **Virtual matrix capability**
- **Designed for multi-monitor environments**
- **Internet based maps, such as Google® maps, integrate flawlessly into custom map lists**
- **Customize visual alarms in map manager**
- **Remotely monitor video, audio and alarms**
- **Create infinite customized user accounts**
- **Configure recorders remotely**
- **View cameras from multiple Discovery III recorders on the same screen**
- **Create custom live camera views**
- **Connect to multiple sites simultaneously**
- **Recorder health check**
- **Control cameras with PTZ capabilities**

SYSTEM REQUIREMENTS

Minimum: Intel® Core 2 Duo 2.8Ghz (or equivalent) • 1 GB System Memory • DirectX 9 or Higher • 256 MB+ NVIDIA or ATI Video Card² • 256k Network Connection³ • TCP/IP Installed • Microsoft Windows® 7, Vista, or XP⁴ • 1280 x 1024 Display Resolution • 32 Bit Color Depth

Recommended: Intel Quad Core i7 processor (or equivalent) • 2 GB System Memory • DirectX 9 or Higher • ATI 5750 Video Card (or equivalent)² • 512k Network Connection³ • TCP/IP Installed • Microsoft Windows® 7, Vista, or XP⁴ • 1280 x 1024 Display Resolution • 32 Bit Color Depth

Support Software

REMOTE SOFTWARE

Designed to have the look and feel of Galaxy's Server Software, the Galaxy Remote Software is easy to use and contains most of the features found on the recorder. With Remote Software, you can access your Discovery III recorder from anywhere in the world.

FEATURES:

- **Compatible with Windows and Mac**
- **Connect / view live video from any Discovery III recorder**
- **Perform recorder video backups**
- **Control PTZ cameras**
- **Activate control outputs on the recorder**



HARDWARE REQUIREMENTS

RECOMMENDED REQUIREMENTS

- Windows® 7, Vista or XP
- Intel Dual Core 2 Duo 2.8GHZ
- 2 GB RAM
- 256 MB+ NVIDIA or ATI Video Card
- DirectX 9 or Higher
- 256k Network Connection*
- 32 bit Color
- 1280x1024 Resolution

* Lower speed network connections can cause a loss in performance or connection stability

MAC HARDWARE AND SOFTWARE REQUIREMENTS

iOS Version

- Snow Leopard 10.6 or later

* Must be capable of running Snow Leopard 10.6 or later with an Intel processor and 1GB Memory

MINIMUM REQUIREMENTS

- Windows 7, Vista or XP
- Intel Core Duo
- 1 GB RAM
- 256 MB+ NVIDIA or ATI Video Card
- DirectX 9 or Higher
- 256k Network Connection*
- 32 bit Color
- 1280x1024 Resolution

Mac Hardware

- *Mac Mini, *Macbook, *iMac

DIGITAL SIGNATURE VERIFIER SOFTWARE

The Galaxy Digital Signature Verifier is a secure way to verify the authenticity of your image files. To prevent unwanted tampering of images you have exported from the Discovery III recorder, the images are marked with a Digital Signature. This signature is read and verified by this application. If the image has been changed in any way, you are notified.

FEATURES:

- **Verifies JPG files and AVI video files**
- **Uses the recorder site-code to authenticate images**
- **Warns you if the image has been tampered with**
- **Notifies you if the image has not been tampered with**

HARDWARE REQUIREMENTS

RECOMMENDED REQUIREMENTS

- Windows 7, Vista or XP
- Intel 3 GHz+ CPU
- 512 MB RAM
- DirectX 9 or Higher

MINIMUM REQUIREMENTS

- Windows 7, Vista or XP
- Intel 2 GHz+ CPU
- 256 MB RAM
- DirectX 9 or Higher

BACKUP VIEWER SOFTWARE

Viewing video exported from the Discovery III recorder is easy. The Backup Viewer is designed with the same look and feel as the Galaxy's Server Software search screen making it easy to operate and understand. You can export video to JPG or AVI, perform advanced searches, and more. The Backup Viewer is available as a stand-alone application included with exported video files from the recorder.

FEATURES:

- View video exported in its proprietary format
- Export to JPG or AVI
- Perform advanced searches
- Print images

HARDWARE REQUIREMENTS

RECOMMENDED REQUIREMENTS

- Windows® 7, Vista or XP
- Intel 3 GHz+ CPU
- 1 GB RAM
- Network Connection / CD-ROM / DVD
- DirectX 9 or Higher
- 32 Bit Color
- 1280 x 1024 Resolution

MINIMUM REQUIREMENTS

- Windows 7, Vista or XP
- Intel 2 GHz+ CPU
- 512 MB RAM
- Network Connection / CD-ROM / DVD
- DirectX 9 or Higher
- 32 Bit Color
- 1024 x 768 Resolution

EMERGENCY AGENT SOFTWARE

The Galaxy Emergency Agent software is a powerful, secure way to manage your alarm inputs. View alarms as they come in, conveniently search previous alarms, and easily organize events. The Emergency Agent is available as a standalone version which can be hidden until an alarm is activated, or as a version that is incorporated into the RADIUS Multi-Site software.

FEATURES:

- View alarm events as they happen
- Easily organize alarm events
- Search and play video from past alarm events

HARDWARE REQUIREMENTS

RECOMMENDED REQUIREMENTS

- Windows 7®, Vista or XP
- Intel 3 GHz+ CPU
- 1 GB RAM
- Network Connection
- DirectX 9 or Higher
- 32 Bit Color

MINIMUM REQUIREMENTS

- Windows 7, Vista or XP
- Intel 2 GHz+ CPU
- 512 MB RAM
- Network Connection
- DirectX 9 or Higher
- 32 Bit Color

MDVR MOBILE SECURITY SOFTWARE

The Galaxy MDVR mobile software is a convenient new way to access your video. View live video from your mobile device.

FEATURES:

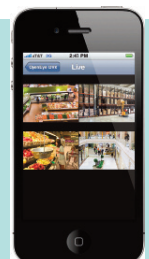
- View video from any camera
- View video full screen
- Connect via wireless connection

PROFESSIONAL GRADE RECORDER

- iPhone 4 / 3GS / 3G
- iPod Touch
- iPad
- Android
- BlackBerry Bold

COMMERCIAL GRADE RECORDER

- iPhone 4 / 3GS / 3G
- iPod Touch
- iPad
- Android
- BlackBerry Bold

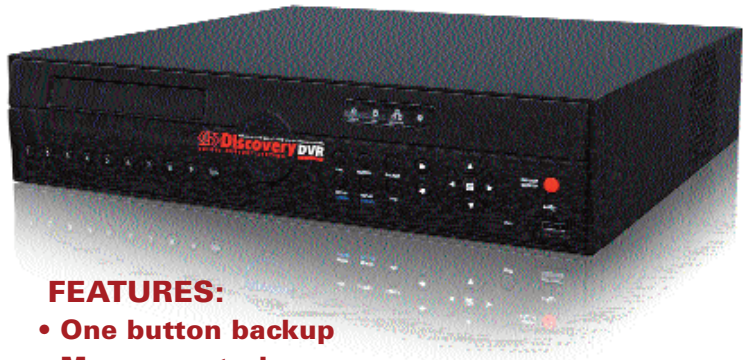


E-Series Max & Slim Embedded Recorders

Commercial Grade

The Discovery III E-Series DVR is a powerful and affordable video management solution designed for easy installation and operation. The Discovery III E-Series DVR comes ready for fast and seamless integration within your existing IT infrastructure and offers quick search, setup, and backup features.

The E-Series DVR offers unparalleled stability, security and ease of use in a 2U chassis. With quick setup options and a no-hassle instant backup feature on the front panel, the E-Series DVR offers you a reliable, easy to operate and administer security solution. Remote management of the E-Series has never been simpler. Using the RADIUS remote software, multiple remote users can view, search and backup data for off-site video storage as well as configure the DVR and perform remote software updates. Built with the quality and expertise users have come to expect from Galaxy, the E-Series is up to the task for your next surveillance installation.



FEATURES:

- **One button backup**
- **Mouse control**
- **Three year warranty with one year advance replacement warranty**
- **Remotely upgradeable firmware**
- **Free DDNS for life of product**
- **2-way audio**
- **Remote health check and e-mail notification**
- **Free multi-site enterprise level management and monitoring software**
- **Independent channel quality, resolution and frame rate settings**
- **ReportStar ready**

PRODUCT SPECIFICATIONS

	E-SERIES MAX (960H)		E-SERIES SLIM (960H)		
Camera Channels	8	16	4	8	16
Looping Outputs	0	16	0	0	0
Max IPS Per Channel	30	30	30	30	30
Recording Rate (IPS)	240	480	120	240	480
Live Display Rate (IPS)	240	480	120	240	480
Audio Channels	1	1	1	1	1
Video Outputs	1 VGA, 1 HDMI, 1 BNC				
Digital Relay Outputs	1	1	1	1	1
Alarm Sensor Inputs	4	4	4	4	4
Image Compression	H.264				
Recording Resolutions	352x240, 704x240, 720x240, 704x460, 960x480 (NTSC)				
Video Signal Loss Detection	Yes				
Motion Detection	Custom grid, adjustable sensitivity				
Remote Operation	Web Viewer (IE11), RADIUS, Mobile Apps, Mac Viewer				
PTZ Control	RS-485				
Storage Size	Up to 4TB	Up to 6TB	Up to 2TB	Up to 4TB	Up to 6TB

X-Series Professional Grade Hybrid Recorder

Extreme Performance

The X-Series Super Hybrid is a professional grade, feature rich, 3U hybrid video recording solution available with 16 channels. All channels offer analog or network video recording for a full hybrid recording solution. Offering support for third-party integration for access control systems and central station monitoring, the X-Series is much more than a standard recorder.

With analog recording capability of up to 480 IPS, network video recording capability, and up to 12TB of internal storage, the X-Series offers a wide range of features to fit your specific application. Any number of Discovery X-Series recorders can be combined (in the same facility or in different locations) with our RADIUS Multi-Site Management Software for complete alarm and recorder management.



FEATURES:

- **Dynamic IP camera discovery and configuration**
- **H.264 / MPEG-4 / M-JPEG codec support**
- **Up to 16 hybrid recording channels**
- **Active Directory support**
- **Server-side or camera-side motion detection (analog & IP)**
- **ReportStar ready**
- **Dual gigabit network connections**
- **360° camera support**
- **Up to 12TB storage**
- **ONVIF™ compliant**
- **RADIUS VMS license included**
- **ReportStar® ready**

PRODUCT SPECIFICATIONS		
	SHM480	SHM240
Camera Channels	16	16
Looping Outputs	16 via cable connector	-
Max IPS Per Channel	30	30
Recording Rate (IPS)	480	240
Live Display Rate (IPS)	480	480
Audio Channels	16	16
Video Outputs	1 DVI-D, 1 VGA, 1 HDMI, 1 Display Port, 1 RCA Spot Monitor	
Digital Relay Outputs	4	4 via cable connector
Alarm Sensor Inputs	16	16 via cable connector
Image Compression	H.264, MPEG-4, M-JPEG	H.264, MPEG-4, M-JPEG
Hybrid Recording Resolutions	360x240, 720x240, 720x480 (NTSC)	360x240, 720x240, 720x480 (NTSC)
IP Recording Resolutions	Dependent on the resolutions the network video device supports	
Video Signal Loss Detection	Yes	Yes
Motion Detection	Up to 15 motion areas, Adjustable sensitivity	
Remote Software	Remote, RADIUS, Web Viewer, Mobile Apps	
PTZ Control	RS-485 / IP protocols	
Recording Mode	Continuous, Motion Detection, Sensor	
Playback Search	Multiple Enhanced Search Capabilities	
Backup	DVD±RW, Network, USB 2.0/3.0	
Digital Signature Support	Yes, AVI and JPG	
Dynamic DNS	Free for Life of Product	
ReportStar Enabled	Yes	
ONVIF Compliant	Yes	
Operating System	Microsoft® Windows 7® Embedded	
Storage Size	2TB standard /Up to 12TB (JBOD)	2TB standard /Up to 8TB (JBOD)
Network	Dual GbE	
External Storage Options	-	
Warranty	3 Years / 1 Year Advance Replacement	

X3-Series Hybrid Recorder

Professional Grade

The Discovery III X3 HVR is a professional grade, feature rich, 3U hybrid video recording solution available in 8 and 16 channels. Offering upgrades for video analytics, support for access control systems, and full integration with POS solutions, the X3 is much more than a standard recorder.

With recording capabilities as high as 480 IPS, network video recording capabilities, and up to 6TB of internal storage, the X3 offers a wide range of features and models to fit your specific application. Any number of Discovery III X3 recorders can be combined (in the same facility or in different locations) with our RADIUS Multi-Site Management Software for complete alarm and recorder management.

The Discovery III server software comes ready for fast and seamless integration within your existing IT infrastructure.



FEATURES:

- **H.264 / MPEG-4 / M-JPEG codec support**
- **4 hybrid recording channels standard**
- **Supports up to 32 hybrid recording channels***
- **Dual monitor support standard**
- **Multi-site administration and viewing software**
- **RAID 5 option (internal and external)**
- **Video analytics capabilities using TruSight software**
- **Optional point of sale & ATM support**
- **ReportStar ready**

* Limited to number of analog recording channels.

X-3 MODELS	
OE5-X3U24016	16 Channel 240 IPS HVR
OE5-X3U24008	8 Channel 240 IPS HVR
OE5-X3U24016E	16 Channel 240 IPS HVR with 240 Live
OE5-X3U12016R	16 Channel 120 IPS HVR with RealTime Live
OE5-X3U12008R	8 Channel 120 IPS HVR with RealTime Live

PRODUCT SPECIFICATIONS		
	X3U248	X3U4816
Camera Channels	8	16
Looping Outputs	8	16
Max IPS Per Channel	30	30
Recording Rate	240 IPS	480 IPS
Live Display Rate	240 IPS	480 IPS
Audio Channels	8	16
Video Outputs	1 DVI-D, 1 VGA, 1 HDMI, 1 Display Port, 1 RCA Spot Monitor	
Digital Relay Outputs	4	4
Alarm Sensor Inputs	8	16
Image Compression	H.264, MPEG-4, M-JPEG	
Hybrid Recording Resolutions	360x240, 720x240, 720x480 (NTSC)	
IP Recording Resolutions	Dependent on the resolutions the network video device supports	
Video Signal Loss Detection	Yes	
Motion Detection	Up to 15 Custom Motion Areas / Adjustable Sensitivity	
Remote Software	Discovery Remote, RADIUS, Web Viewer, Mobile Apps	
PTZ Control	RS-485/IP protocols	
Recording Mode	Continuous, Motion Detection, Sensor	
Playback Search	Multiple Enhanced Search Capabilities	
Backup	DVD±RW, Network, USB 2.0, 3.0	
Digital Signature Support	Yes, AVI and JPG	
Dynamic DNS	Free for Life of Product	
ReportStar Enabled	Yes	
ONVIF Compliant	Yes	
Operating System	Microsoft® Windows 7® Embedded	
Storage (Size)	2TB standard / Up to 12TB (JBOD)	
Network	Dual GbE	
External Storage Options	RAID 5 iSCSI (Up to 64TB with Unlimited Scalability)	
Warranty	3Years / 1Year Advance Replacement	

X4-Series Hybrid Recorder

Professional Grade

The Discovery III X4 HVR is a professional grade, high performance, 4U hybrid video recorder built for reliability and system longevity. The X4 supports upgrades for video analytics, support for access control systems, and full integration with POS solutions.

With recording capabilities as high as 480 IPS, optional RAID 5, and up to 8TB of internal storage, the X4 offers a large assortment of features and models to fit your specific application. X4 recorders are designed for mission-critical applications. With removable drives and RAID 5 capability, system downtime is minimized and data loss is prevented in the event of a hard drive failure.

The X4 chassis is equipped with four removable drive bays, making it quick and easy for users to insert or remove drives on the fly while in the field. X4 HVRs are ideal for applications involving critical infrastructure protection, such as military, law enforcement, gaming, and high-security corporate environments.



FEATURES:

- **H.264 / MPEG-4 / M-JPEG codec support**
- **4 hybrid recording channels standard**
- **Supports up to 32 hybrid recording channels***
- **Dual monitor support standard**
- **Multi-site administration and viewing software**
- **RAID 5 option (internal and external)**
- **Optional video analytics capabilities using Galaxy's TruSight software**
- **Optional point of sale & ATM support**
- **ReportStar ready**

* Limited to number of analog recording channels.

X-4 MODELS	
X4U48032	32 Channel 480 IPS HVR
X4U48016	16 Channel 480 IPS HVR
X4U24032	32 Channel 240 IPS HVR
X4U24016	16 Channel 240 IPS HVR
X4U24008	8 Channel 240 IPS HVR

PRODUCT SPECIFICATIONS		
	X4U4816	X4U4832
Camera Channels	16	32
Looping Outputs	16	32
Max IPS Per Channel	30	
Recording Rate (IPS)	480	
Live Display Rate (IPS)	480	
Audio Channels	16	
Video Outputs	1 DVI-D, 1 VGA, 1 HDMI, 1 Display Port	
Digital Relay Outputs	16	
Alarm Sensor Inputs	16	
Image Compression	H.264, MPEG-4, M-JPEG	
Hybrid Recording Resolutions	360 x 240, 720 x 240, 720 x 480 (NTSC)	
IP Recording Resolutions	Dependent on resolutions supported by network device	
Video Signal Loss Detection	Yes	
Motion Detection	Up to 15 motion areas, Adjustable sensitivity	
Remote Software	Remote, RADIUS, Web Viewer, Mobile Apps	
PTZ Control	RS-485 / IP protocols	
Recording Mode	Continuous, Motion Detection, Sensor	
Playback Search	Multiple Enhanced Search Capabilities	
Backup	DVD±RW, Network, USB 2.0/3.0	
Digital Signature Support	Yes, AVI and JPG	
Dynamic DNS	Free for Life of Product	
ReportStar Enabled	Yes	
ONVIF Compliant	Yes	
Operating System	Microsoft® Windows 7® Embedded	
Storage Size	2TB standard /Up to 16TB (JBOD / RAID)	
Network	Dual GbE	
External Storage Options	RAID 5 iSCSI (Up to 64TB with Unlimited Scalability)	
Warranty	3Years / 1 Year Advance Replacement	

R-Series Remote Client Workstation

Professional Grade

The Discovery III R-Series is manufactured to provide optimized performance and usability. Built for network and hybrid video environments, the R-Series is designed to support the highly-intensive requirements of megapixel, multi-compression installations.



The Galaxy R-Series Remote Client Workstation system also improves user productivity and maximizes central management capabilities by providing support for multi-display environments.

Galaxy's TruSight software is Multi-Site Video Management Software, a powerful utility that allows you to control over 100 units using one computer. This software allows you to view live video, search saved video, edit and configure setup on each recorder, and import maps of buildings and other locations.

Galaxy's TruSight software was specifically designed as an Enterprise software solution.

FEATURES:

- **Optimized and designed for Microsoft® Windows® 7**
- **Dual or quad video output display capabilities**
- **Dual gigabit network connection**
- **Galaxy multi-site administration and viewing software installed**
- **Connect to multiple recorders in multiple locations simultaneously**
- **360° camera support**
- **Search multiple recorders simultaneously**
- **Front USB ports for easy backup**

PRODUCT SPECIFICATIONS

	OE-RWSR2* OE-RWSR4**	OE-RWST2* OE-RWST4**
CPU/Processor	Intel® Quad Core™ i7 Processor	
Video Outputs*	1 x DVI-D, 1 x VGA, 1 x HDMI, 1 x Display Port	1 x DVI-D, 1 x DVI-I, 2 x VGA, 2 x HDMI, 1x Display Port
Memory	4GB DDR3 Memory	
Power		
RWSR2/4	400W Power Supply	400W Power Supply
RWST2/4	250W Power Supply	250W Power Supply
Network	Dual GbE	
Backup	DVD±RW, Network, USB 2.0 / 3.0	
Operating System	Microsoft® Windows 7® Professional	
Storage (Size)	2TB standard	
Dimensions		
RWSR2/4	L: 19.5" (495 mm) x W: 17.2" (437 mm) x H: 5.8" (148 mm)	
RWST2/4	L: 16.3" (415 mm) x W: 5.5" (140 mm) x H: 13" (330 mm)	
Warranty	2 Years / 1 Year Advance Replacement	

*2 video connections maximum, 2 on-board connections

**4 video connections maximum: 2 on-board connections, and 2 video card connections.



Corporate Commitment to Excellence

Galaxy Control Systems was established to bring innovative solutions to the security market. Since 1984, Galaxy has maintained an unwavering commitment to excellence in developing access control and security management solutions that seamlessly integrate with advancing technology from leading industry partners.

Dedication to product development is only part of the business philosophy at Galaxy Control Systems. All Galaxy products are manufactured in the United States to rigorous military standards for the utmost quality and reliability. The company also offers total support to its customers through an extensive national and international network of highly trained, factory-authorized dealers.

